

**JBL**

**Ecouteurs  
TUNE 225 TWS**

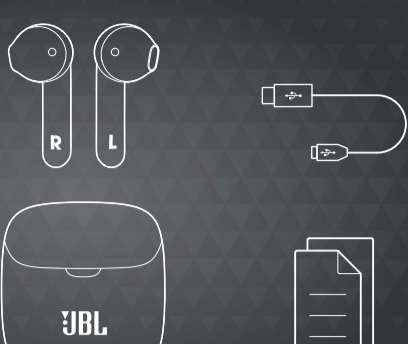
# QUICK START GUIDE

TUNE 225TWS

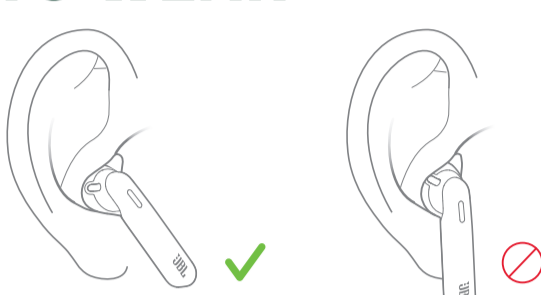


BC

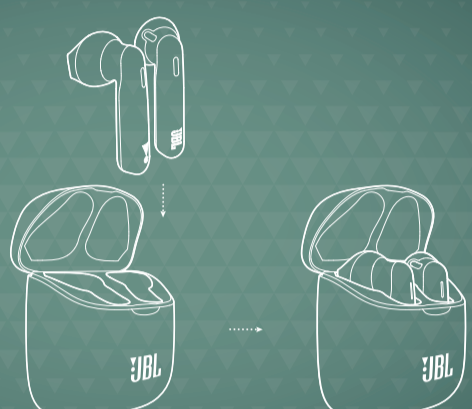
## WHAT'S IN THE BOX



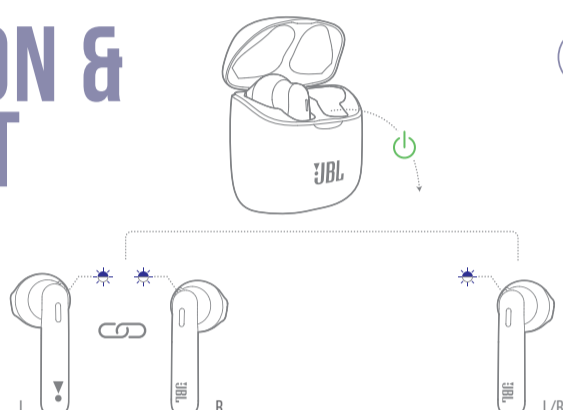
## HOW TO WEAR



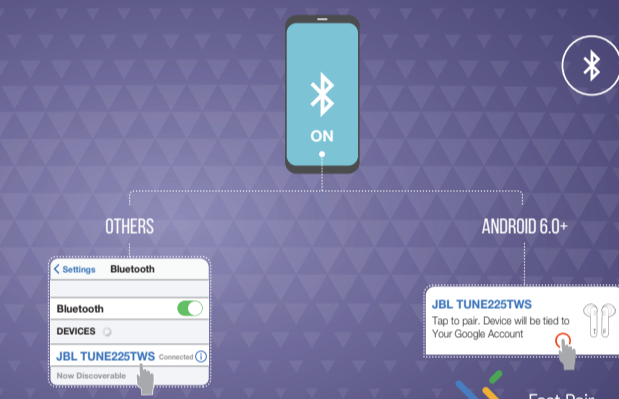
## FIRST TIME USE



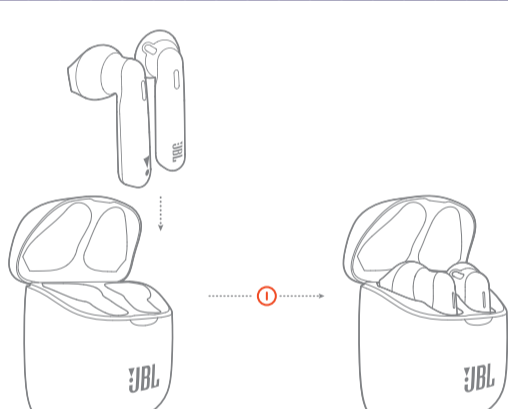
## POWER ON & CONNECT



## PAIRING



## POWER OFF

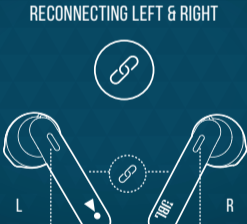


## MANUAL CONTROLS

### POWER ON & CONNECT TO DEVICE



### RECONNECTING LEFT & RIGHT



### POWER ON



### POWER OFF

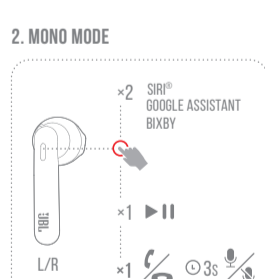


## BUTTON COMMAND

### 1. STEREO MODE



### 2. MONO MODE



## CHARGING



## LED BEHAVIORS



## TECH SPEC

Driver Size:	12 mm Dynamic driver
Frequency Response:	20 Hz – 20 kHz
Sensitivity:	105 dB SPL
Maximum SPL:	98 dB SPL
Microphone sensitivity:	-30 dBV@1 kHz/Pa
Impedance:	32 ohm
Bluetooth transmitted power:	<12 dBm
Bluetooth transmitted modulation:	GFSK/ π/4DQPSK/ 8DPSK
Bluetooth frequency:	2.402 GHz – 2.48 GHz
Bluetooth profile version:	A2DP 1.3, AVRCP 1.5, HFP 1.7
Bluetooth version:	5.0
Headset battery type:	Lithium-ion battery (22 mAh / 3.85 V)
Charging case battery type:	Lithium-ion battery (410 mAh / 3.85 V)
Power supply:	5 V --- 1.0 A
Charging time:	<2 hrs from empty
Music playtime with BT on:	up to 5 hrs
Total music playtime with charging case:	up to 25 hrs
Weight:	57 g



